

O2Works

Putting Oracle to Work

Oracle E-Business Specialists

Launching the Procurement Enterprise Command Center

Cal Kondratiuk

Advanced Procurement Practice Lead

About O2Works

O2Works is one of the leading E-Business Suite services providers offering the most experienced teams of functional and technical consultants in the industry. Our hands-on **resources average 20+ years of experience** focused exclusively on implementing, upgrading, integrating, and extending Oracle's E-Business Suite.



Services offered

Implementations (modules or full)	Managed Service / Remote Support	Upgrades - Apps and databases	Client Advocate Services
Application Optimization	Training	Quality assurance	Training

Presentations, White Papers, and other information shared on-line at: <https://o2works.com/knowledge-works/>

Procurement Command Centers Agenda

- Enterprise Command Center Overview
- Procurement Command Center Review
- Implementation Considerations
- Procurement Command Center Demonstration
- Additional Resources



Enterprise Command Centers Background

- In 2011, Oracle acquired Endeca, a company known for its Business Intelligence and Enterprise Search applications
- For years Oracle sold the in-memory application as Endeca Information Discovery and then as Oracle Information Discovery.
- In 2018, Oracle rebranded the product as Enterprise Command Centers and offered it **free** as part of the E-Business Suite license.
- They are **role-based, Business Intelligence dashboards** with near real-time information driven navigation by job function.
- As of September, 2020 there are 30 Command Centers with more than 100 dashboards.

Enterprise Command Centers

- Enterprise Command Centers (ECC) provide **information discovery** along with visualization and exploration capabilities embedded within user interfaces.
- The ECC Framework enables the creation of **business dashboards** in different functional areas.
- Users navigate transactional information using interactive visual components and guided discovery capabilities allowing exploratory **data analysis**.
- Mobility and responsive design are built into the Oracle ECC Framework, and all dashboards automatically **adjust** the layout to better fit a desktop form factor.
- The ECC Framework automatically adheres to **existing** E-Business Suite **security**. The dashboard content is completely consistent with the context and security.

Enterprise Command Centers

- 30 Operational Areas – Version 5
- No additional license costs – ‘*turn on and deploy*’.
- Command Center Pages use EBS application navigation.
- Full MLS support – same as EBS applications.
- Focuses on finding priority, action required transactions without customized reporting.



Key information on Enterprise Command Centers

- The best source of information for the Enterprise Command Centers is the **Oracle Enterprise Command Center (ECC) Framework –V5 Quick Start Guide**.
- It can be found at:
<https://www.oracle.com/a/ocom/docs/applications/ebusiness/ebs-enterprise-command-center-quick-start-guide.pdf>
- The 6 page .pdf provides Implementation, Training, and User guides for 29 Command Centers as well as introductory videos and a link to the Oracle Enterprise Command Center – EBS (MOSC) Community



Enterprise Command Centers Overview

- Role-based dashboards with information-driven navigation by job function
 - Allows for browsing and drilling into actionable indicators & near **Real Time Data**
 - Uses tools and dashboard visualizations such as actionable indicators, tag clouds, interactive charts, and consumer-like search and filters
 - Displays data recalculated with each drilldown
 - Facilitates prioritization and enables users to narrow in on critical transactions
- Can be applied to Oracle E-Business Suite **12.2.4** and higher
- Extensible framework allows for extending the dashboards
- Available at **no** additional **cost** to licensed users of the underlying Oracle EBS
- Recommend setting up on a separate server (patching required)

Enterprise Command Centers – as of September, 2020

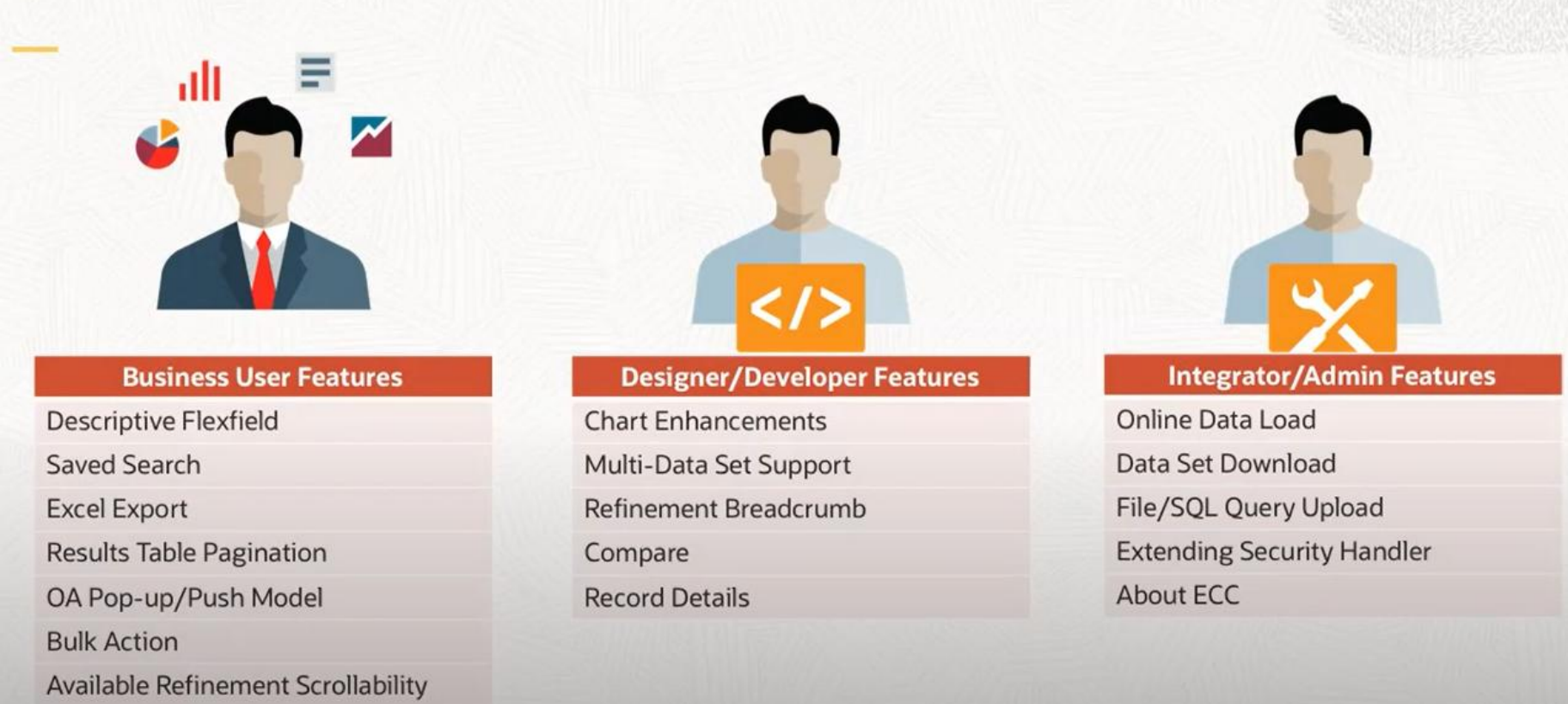
AREA	APPLICATION
Financials	Receivables
	iReceivables
	Payables
	Assets
	Lease Contracts (Property Manager)
	Lease and Finance Management
Order Management and Logistics	Order Management
	Inventory Management
	Advanced Pricing
	i-Store
	Landed Cost Management
	Channel Revenue Management
	Incentive Compensation
Human Capital Mgmt.	Human Resources

** Consumer-like shopping enabled via ECC Framework*

AREA	APPLICATION
Manufacturing	Discrete Manufacturing
	Process Manufacturing
	Outsourced Manufacturing
	Cost Management
	Quality
Asset Lifecycle and Service	Enterprise Asset Management
	Asset Tracking
	Service Contracts
	Service (Teleservice)
	Field Service
	Depot Repair
Procurement and Projects	iProcurement *
	Procurement
	Projects
	Project Procurement
	Contract Lifecycle Management for Public Sector

Enterprise Command Centers Framework

New V4 Framework Features

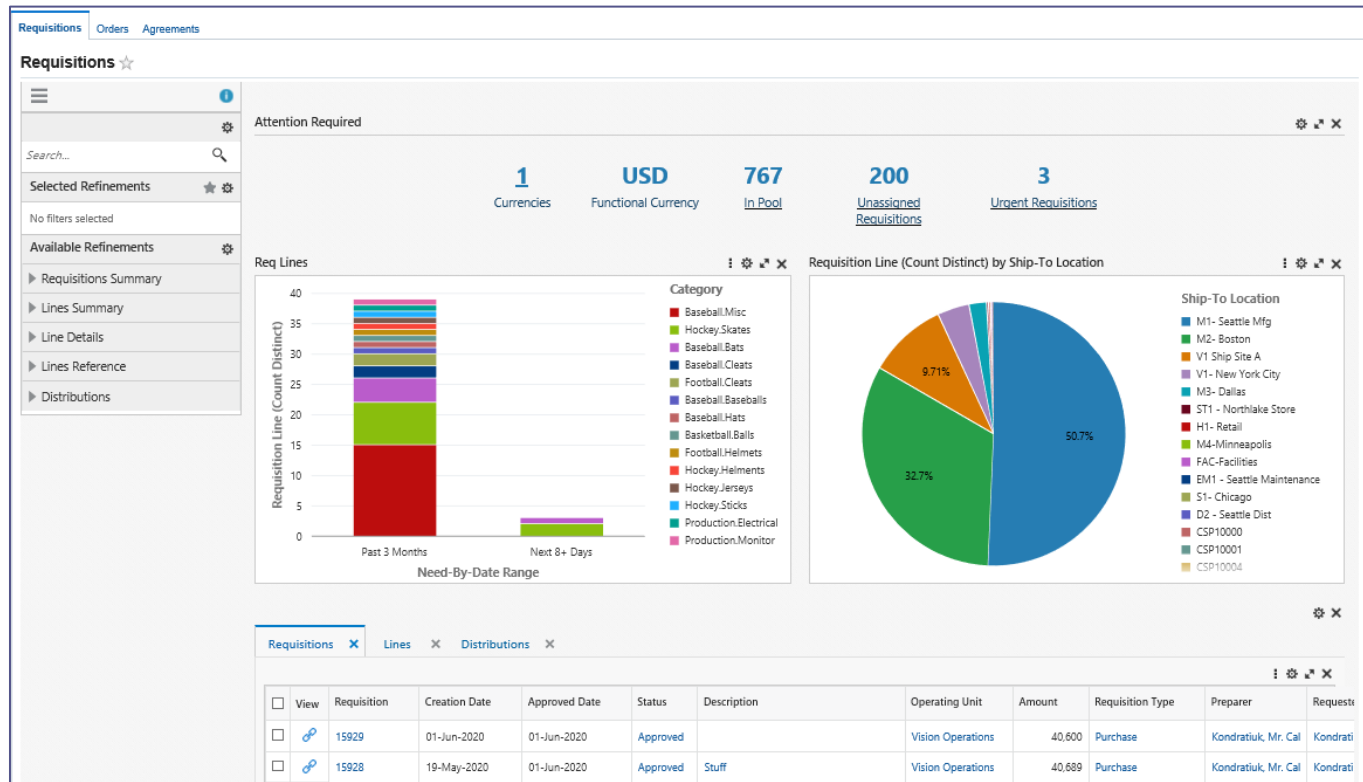


Enterprise Command Center Layout

- Easy to change and add dashboards for EBS data.

Data Attributes
and Metadata

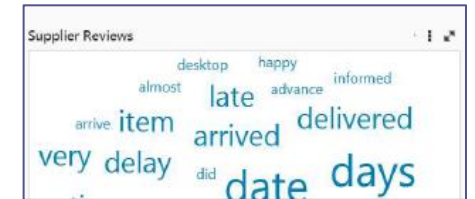
Results Table/Grid



Summary Bar

Charts

Tag Cloud

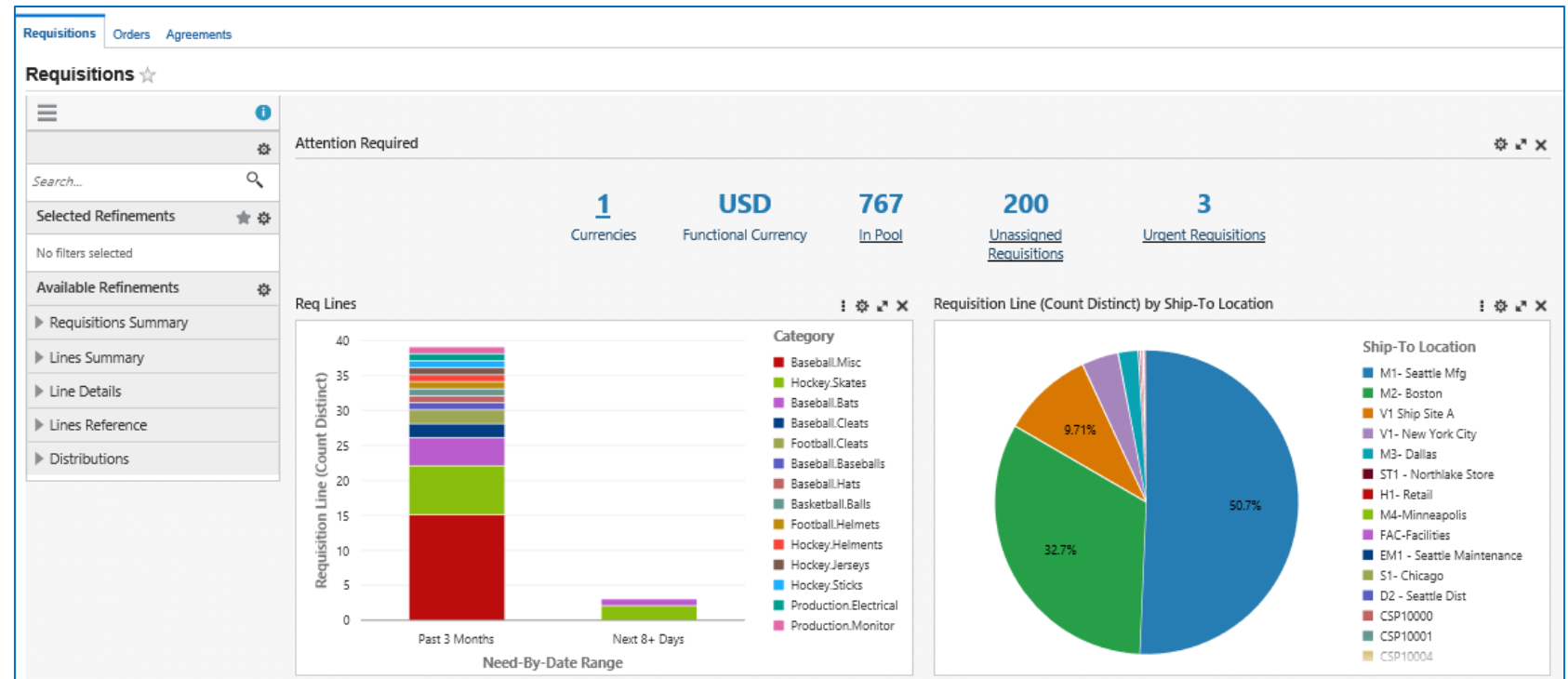


Procurement Command Center Dashboards

- **Procurement Operations** → [Requisitions](#) | [Orders](#) | [Agreements](#)
 - Documents, their statuses and usage.
- **Strategic Sourcing** → [Summary](#) | [Performance](#) | [Quotes](#) | [Bids](#)
 - Track and mitigate risks in achieving objectives.
- **Indirect Procurement** → [Summary](#) | [Performance](#) | [Spend](#) | [Reviews](#)
 - Report on document statuses and agreement usage.
- **Supplier Analysis** → [Summary](#) | [Related Documents](#) | [Performance](#)
 - Investigate supplier history and performance indicators.
- **Item Analysis** → [Item Analysis](#) | [Supplier Relationship](#) | [Documents](#)
 - Metrics for reviewing supplier item performance.

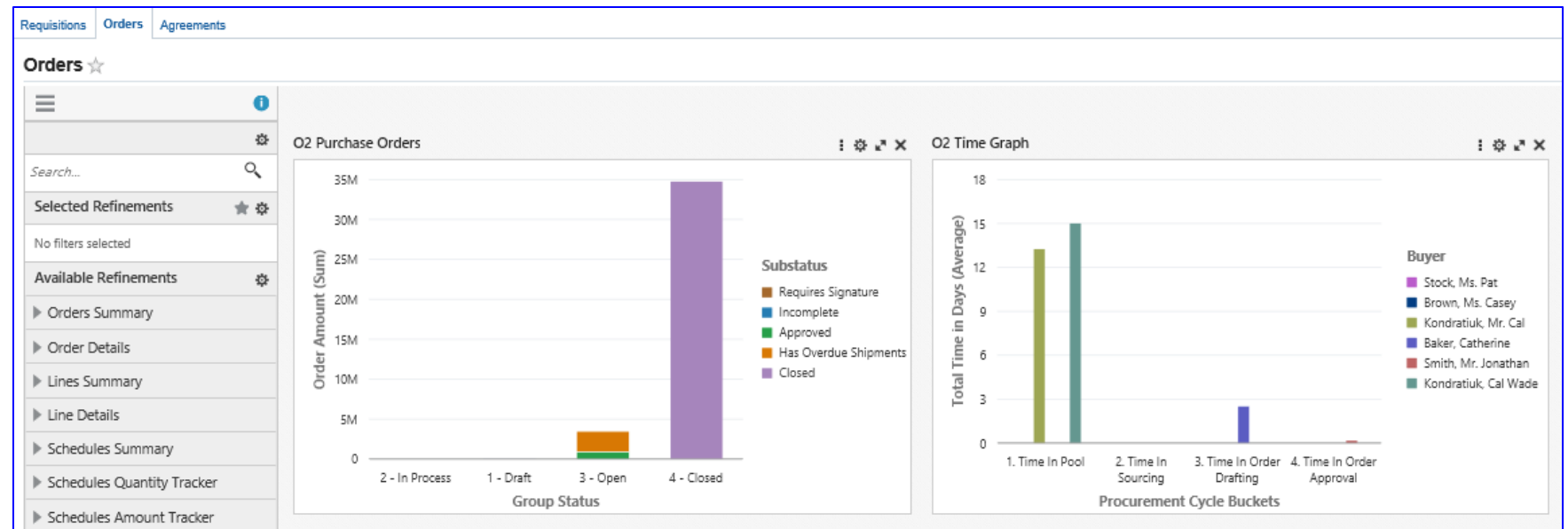
Procurement Operations - Requisitions

- Manage work queue based on **priority**.
- Determine if requisitions can be **sourced** from existing documents.
- Find the preferred **supplier** for a requisition line.
- Manage the Buyer **workflow** for the org.



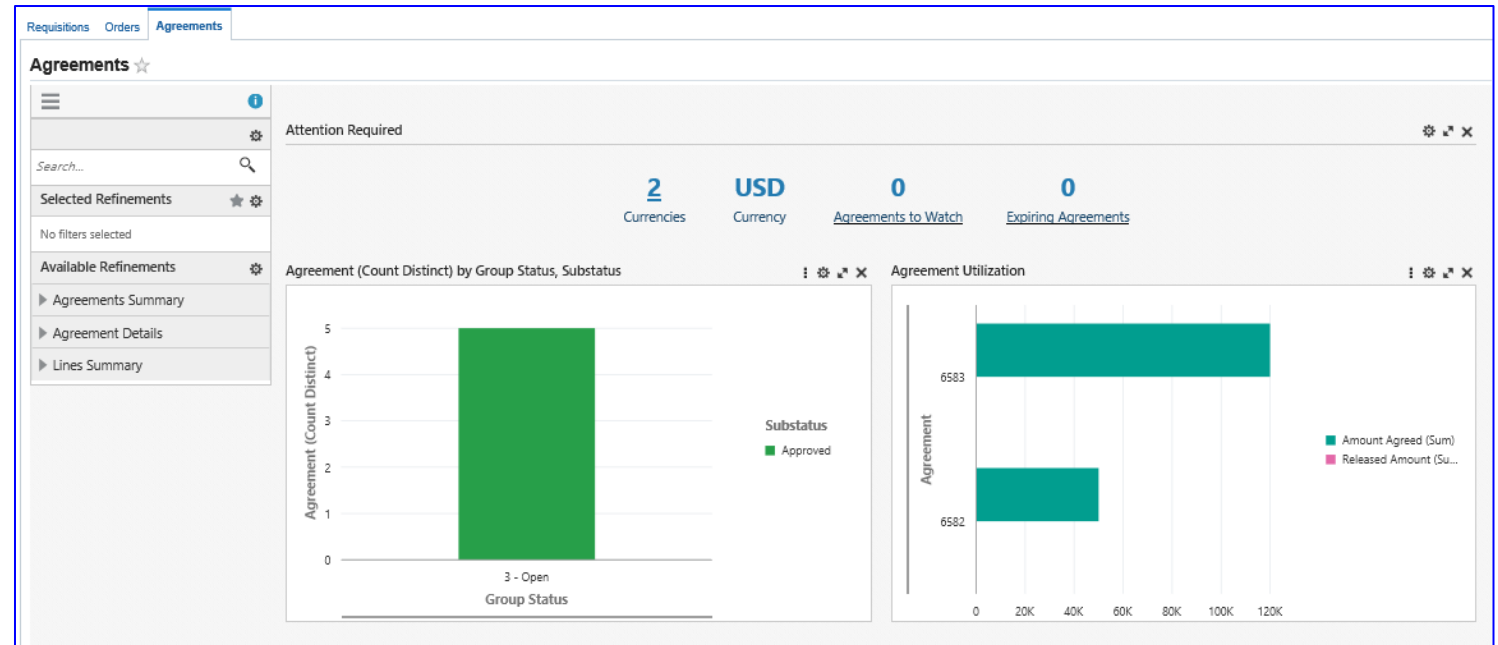
Procurement Operations - Orders

- Manage work **queue** based on status.
- Proactively work with suppliers to manage **shipments**.
- Review time spent on the **lifecycle** for orders and manage the reduction effectively.
- Review based on document **types**.



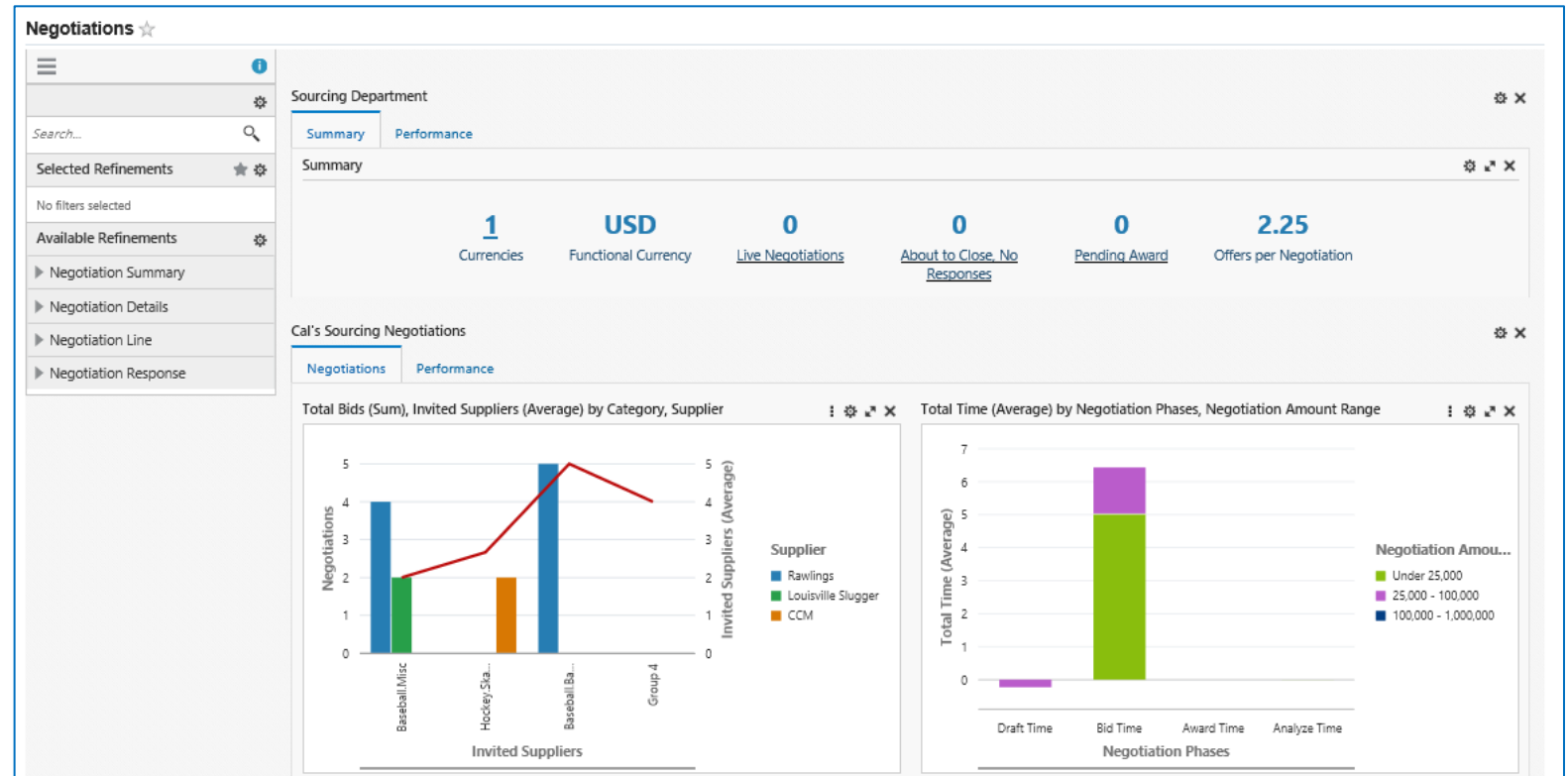
Procurement Operations - Agreements

- Maintain **Best Prices** for the Organization.
- **Extend** Agreements with upcoming expiration dates or amounts agreed.
- Negotiate Agreements that are **over** utilized.
- Reduce off-contract **spend** from low utilization of agreements.



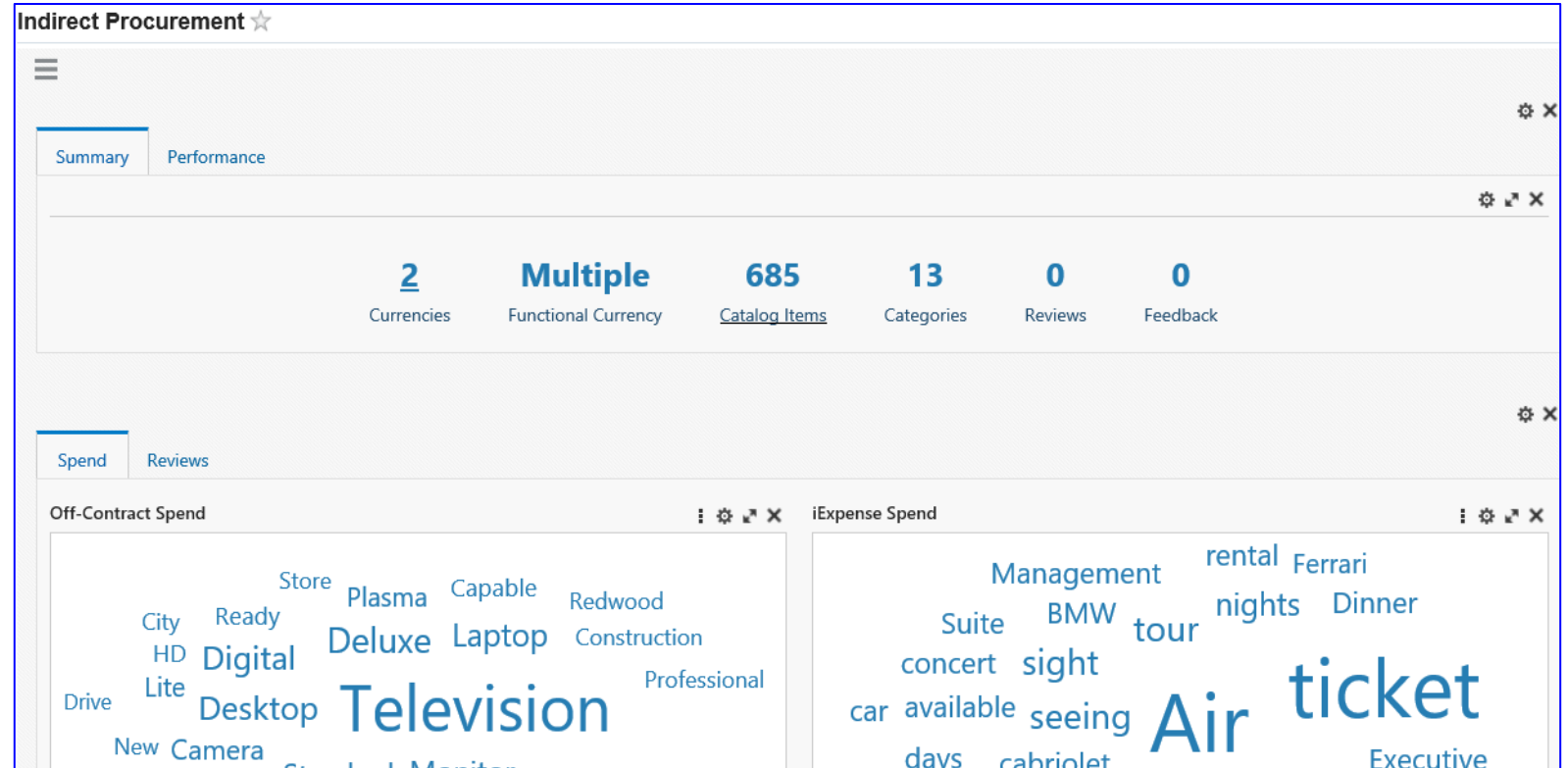
Strategic Sourcing

- View aggregate information from negotiations to track and mitigate risks while achieving strategic **objectives**
- Track negotiation cycle-times and **savings** achieved on each negotiation
- Identify opportunities for **increasing** contract **spend** by gaining insights from non-catalog spend



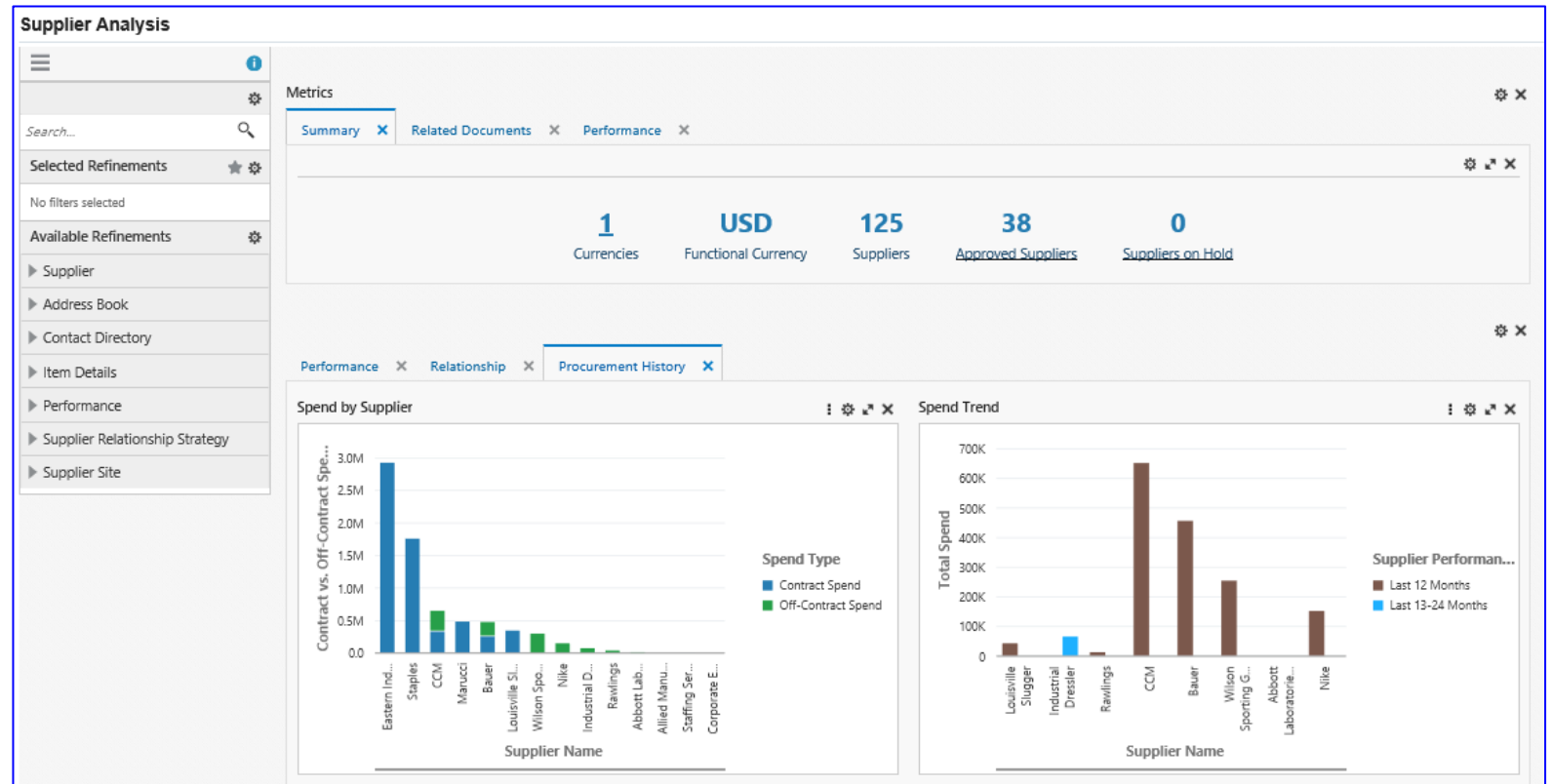
Indirect Procurement

- Improve **catalog** content by reviewing item and supplier ratings
- Act on requester **feedback** to improve the complete procurement process
- Identify opportunities for **increasing** contract **spend** by gaining insights from non-catalog spend



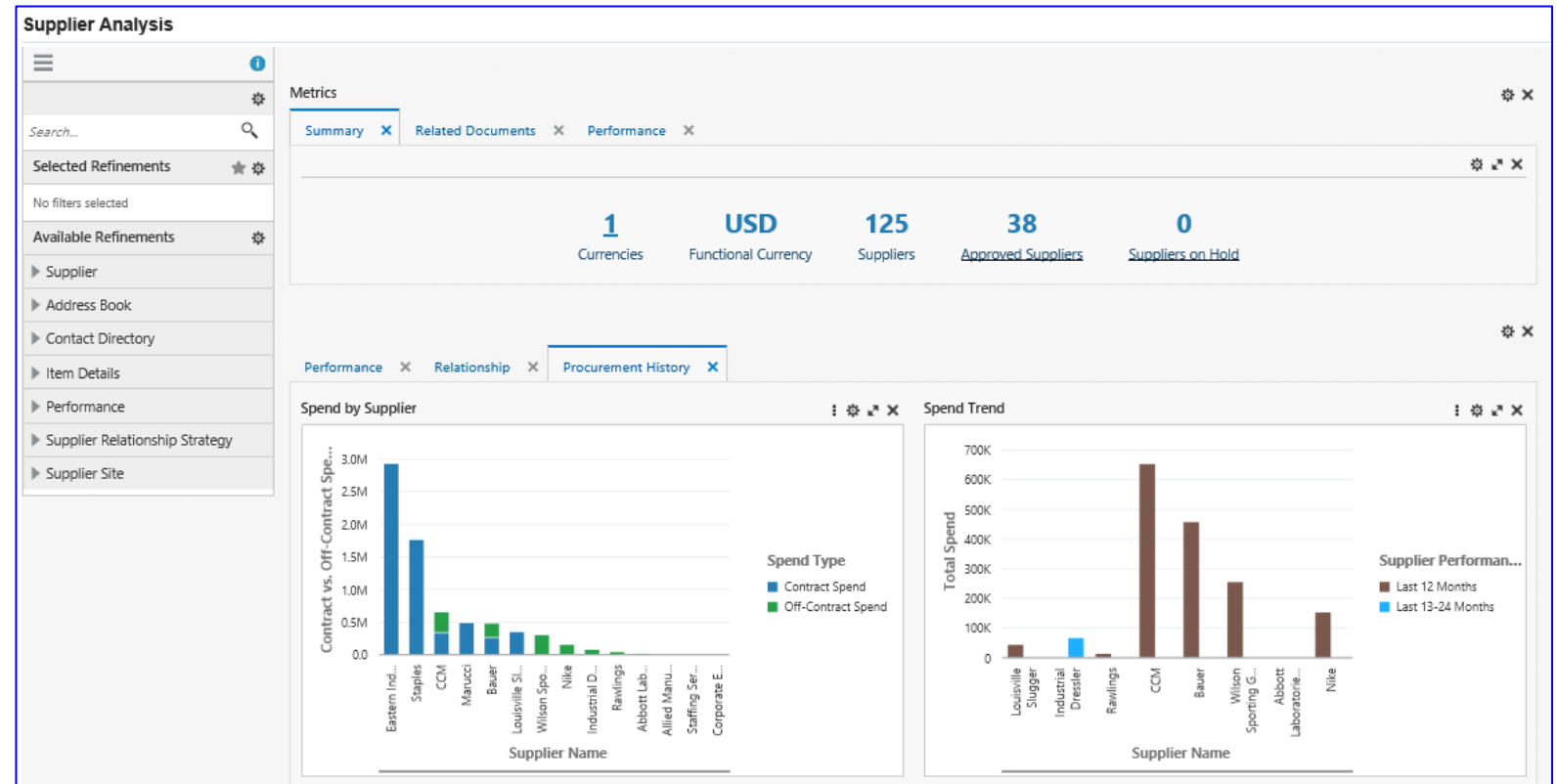
Supplier Analysis

- Investigate suppliers' history and **performance** over time
- Gain insights into the on-time delivery, quality, and price compliance **history** for suppliers
- Use performance and profile to zero in on the **best** qualified suppliers
- Find the **unique** suppliers to meet org objectives and business needs



Supplier Analysis

- Suppliers and Approved Suppliers give a **count** of suppliers and suppliers with approved supplier lists
- **On-Time** Delivery is calculated for all shipments received within the need-by date plus tolerance
- **Price Compliance** is the ration of the invoiced price to the purchase order expressed as a percentage
- **Quality Rating** is the percentage of shipments that had not quality issues

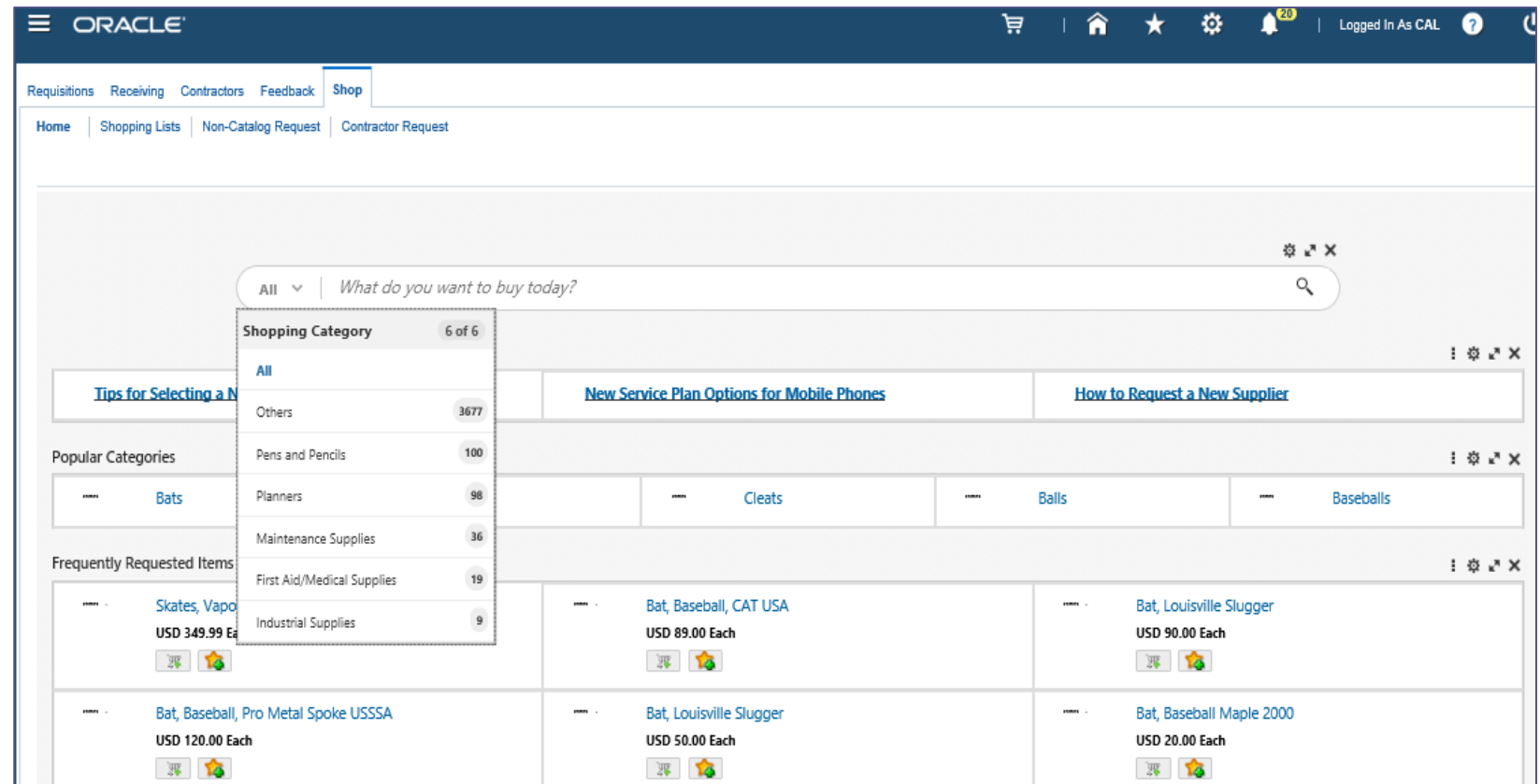


iProcurement Command Center

- iProcurement Command Center provides a consumer like **shopping** experience for the end-user.
 - The **Search** and **Search Results** pages have been developed using the ECC Framework tools.
 - The iProcurement ECC provides a **consumer** shopping page that aligns to trends available to catalog sites in the marketplace.
 - The ECC needs to be **installed** in the instance along with the recommended release **patches**.
 - Includes **Negotiated Savings** through guided-buying with preferred goods/services and suppliers.
 - Includes **feedback** from employees to ensure requirements are met.

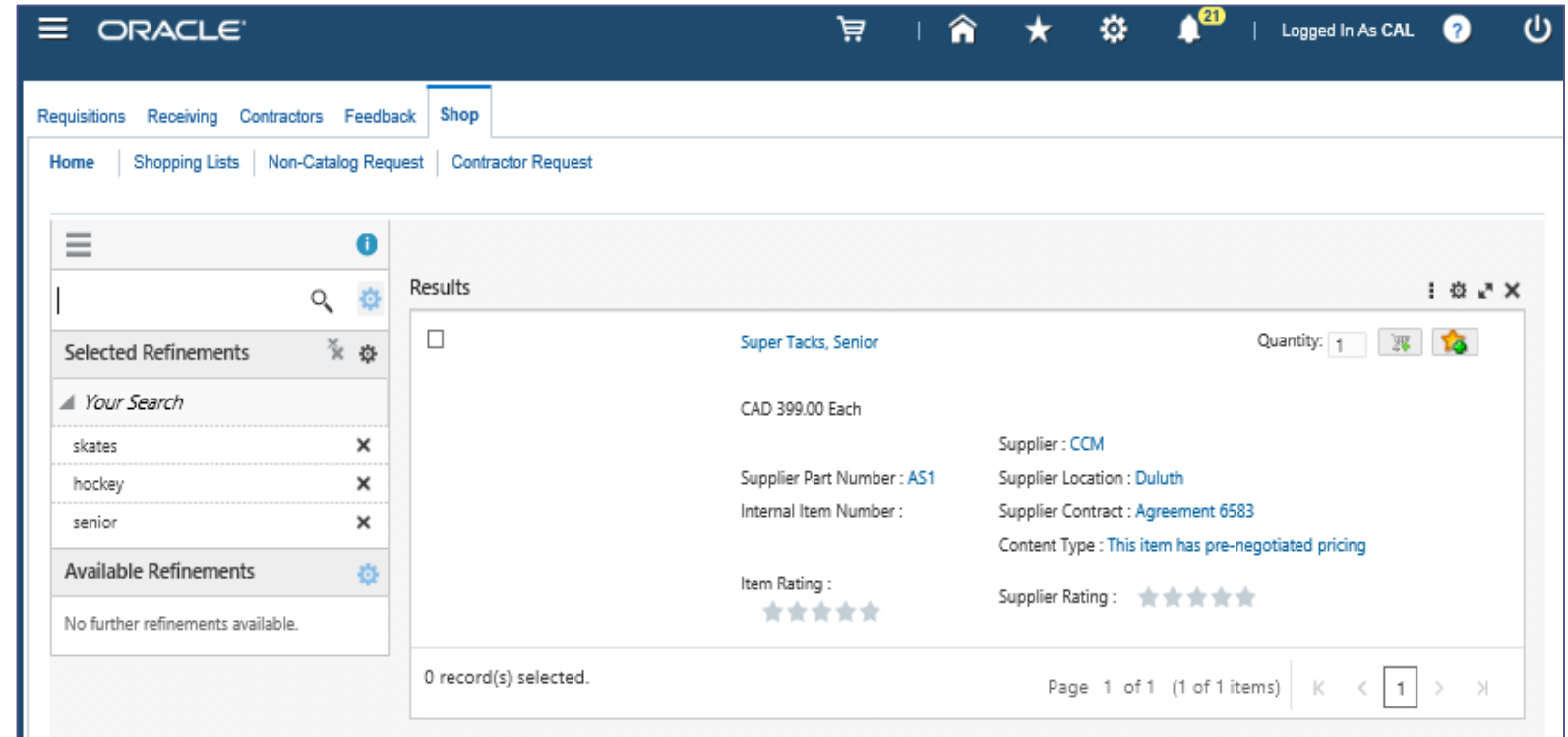
iProcurement – Shopping Page

- Adds *What do you need today* universal **search** that returns multi-word keyword search results
- Adds shopping help search **links**
- Adds popular **category** searches based on previous history
- Adds **frequently** requested catalog products and services for quick creation



iProcurement – Search Results Page

- Adds **refinements** in order to fine-tune the catalog search
- Type **ahead** search provides efficient discovery of goods/services
- Search and **filter** based on multiple refinements
- **Ratings** and reviews for suppliers and items
- Key **item** and **supplier** attribute indicators



Procurement Command Centers

Additional Considerations

- Profile Options
 - *PO: Item and Supplier Analysis Data-load Cut-off* – determines the date from which data would be extracted for loading into the PCC.
- Determine the appropriate date and time to execute the Procurement data load (full load) based on needs of the business.
- For recent transactions, check the latest run of the full/incremental load programs to ensure the programs are run after the creation/update of the data.

Implementation Considerations

- ECC should be installed on a separate Linux server to avoid performance issues (in-memory app that is integrated with EBS)
- Must be used with EBS release 12.2.4 or higher
- Patching will be involved for the framework, applications, applications technology, adapters, analyzer, and some pre-requisites
- [Oracle Enterprise Command Centers V5 Quick Start Guide](#) is a good starting point
- [e-Business Suite 12.2.10 is Available – Sep 2020](#)
- [Announcing Oracle E-Business Suite 2020 Innovations \(PDF\) – Sep 2020](#)

E-Business Suite Learning Subscription - ECC

- Go to:
learn.oracle.com/subscriptions/ebs
- Choose Display By: **Free**
- Find:



EBS Enterprise Command Centers: Direct from Development

COURSE

12 Items 5h 23m

Learn how to extend the value of your applications with Oracle Enterprise Command Centers, discovery-oriented dashboards that bring together diverse operational data from across Oracle E-Business Suite. With tools and visualizations such as actionable indicators, tag clouds, interactive charts, and consumer-like search and filters, users can browse and drill on whatever engages their attention. With each drilldown or search refinement, the entire user interface recomputes, revealing new information on which to base next discovery steps. Through this "conversation with the data", Oracle E-Business Suite users can quickly narrow in on transactions that matter most, and then seamlessly transition to detailed transaction screens to take immediate, informed action.

- ▶ Oracle E-Business Suite Enterprise Command Centers - March 2020 Update
- ▶ Oracle E-Business Suite Enterprise Command Centers - April 2019 Update
- ▶ Empowering E-Business Suite User Experience: Data Discovery and Visualization
- ▶ Empowering E-Business Suite User Experience: Technical Details & Implementation
- ▶ Manage Cash Flow Efficiently with Oracle EBS Enterprise Command Centers
- ▶ Expedite Order Fulfillment with Oracle EBS Enterprise Command Centers
- ▶ Expedite Projects Period Close with Oracle EBS Enterprise Command Centers
- ▶ Manage Maintenance Operations Efficiently with Oracle EBS Enterprise Command Centers
- ▶ Manage Production Operations Efficiently with Oracle EBS Enterprise Command Centers
- ▶ Consumer-Like Shopping in iProcurement with the Oracle EBS Enterprise Command Center Framework
- ▶ E-Business Suite: New Command Centers for Managing Procurement & Projects
- ▶ E-Business Suite: New Consumer-Like Shopping Experience for Employees

Command Center Demonstration

Demonstration Instance

- O2Works 12.2.7 Vision Environment
- Full Install of Enterprise Command Center
- Full Load and Incremental Load Executed on all Command Centers
- User with Buyer Access and Approval Assignments

Additional Speaker Information

Presented at: Oct 1st DFW Joint virtual event with Dallas Oracle User Group and Texas Louisiana Oracle Application Technology User Group



**DALLAS
ORACLE
USERS
GROUP**

For additional questions on this topic, please contact the following email addresses:

Cal Kondratiuk - Advanced Procurement Practice Lead – cal@o2works.com

O2Works LLC

Oracle Applications Consulting

Dallas – Chicago - Denver

972-466-2260

Web: <https://o2works.com/>



O2Works – Knowledge Base:
<https://o2works.com/knowledge-works/>